



Western Intake Partnership

Triangle Water Supply Partnership Update



December 4, 2020



Program Overview

- Raw Water Intake in Jordan Lake & Raw Water Pump Station
- New Raw Water Transmission Infrastructure
- New Regional Water Treatment Facility (WTF)
- New Finished Water Transmission Infrastructure

Phase 1

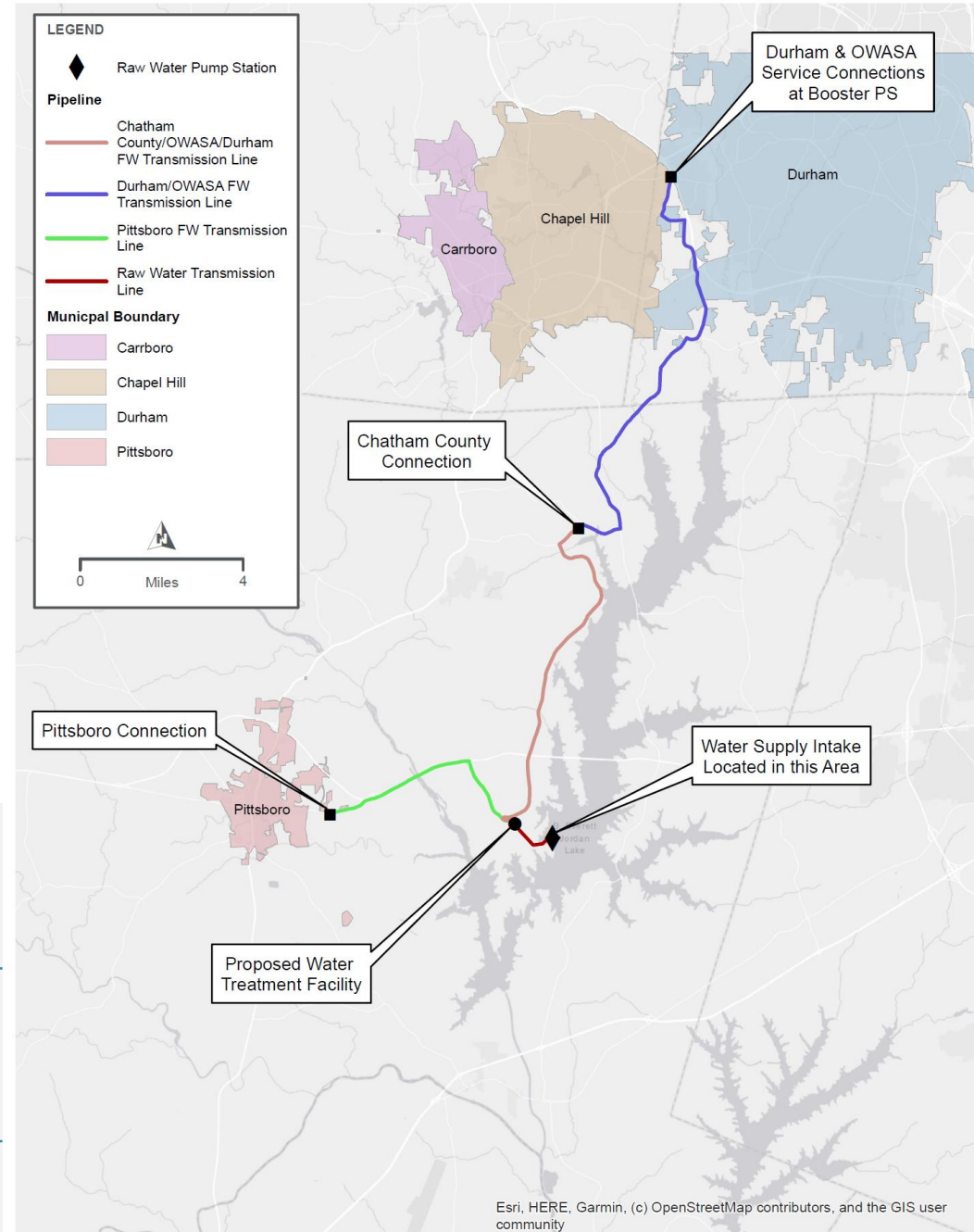
Program Initiation, Preliminary Engineering & Permitting (2020-2023)

Phase 2

Design and Bidding (2023-2026)

Phase 3

Construction (2026-2030)



Esri, HERE, Garmin, (c) OpenStreetMap contributors, and the GIS user community



WESTERN INTAKE PARTNERSHIP PRELIMINARY FACILITY LOCATIONS AND TRANSMISSION LINE ROUTE OPTIONS, FROM 2014 WESTERN INTAKE FEASIBILITY STUDY

WIP Program Status

Initial Workshops: Through January



Preliminary Projects Scoping and Consultant RFQs/RFPs: October-January



Communications Planning: November-February & Beyond





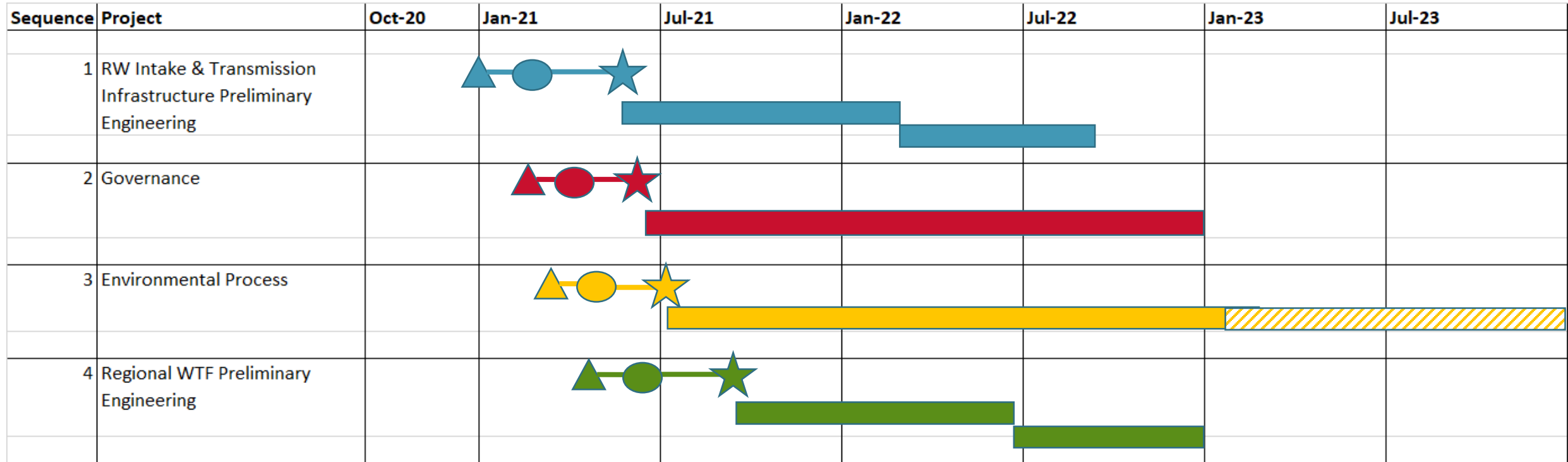
Upcoming Project RFQs/RFP

Schedule for RFQ/RFPs



- October - December:
 - Establish scopes for preliminary projects
 - Determine sequence to advertise projects
 - Draft & revise RFQ/RFPs
 - City of Durham establishes M/W-UBE requirements
- January:
 - Advertise Intake/Transmission Infrastructure RFQ
- February:
 - Begin receiving RFQ responses
 - Advertise WIP Governance RFP

RFQ/Project Sequencing



Current Preliminary RFQ/RFP Schedule

Intake & Pipelines RFQ

early January

WIP Governance RFP

mid-February

Environmental Permitting RFQ

mid-to-late March

Regional WTF RFQ

late April

Expectations for Consultant Selection Process

- Partnership Website is Coming
- City of Durham is Contract Agent, their RFQ template
 - Each RFQ/RFP to be advertised ~6 weeks
 - Presubmittal Meeting is virtual, no site visit
 - Expect M/UBE, W/UBE utilization goals
 - Page limit, but will exclude resumes
- One Partner, One Vote
- Potential for Short-list Interviews
- SOQ to address *Project Considerations & Risks*
- Selection Criteria
 - Approach
 - Proposed Schedule
 - Qualifications
 - Past Performance on Similar Projects
 - Team availability, office locations
 - UBE Utilization

Expectations for the Projects

- Expect a collaborative process
- Preliminary Engineering RFQs – potential for separate solicitation for final design and construction services, pending decision on project delivery approach
- Early Preliminary Engineering deliverables to support NEPA process
- Preliminary Engineering projects: survey & geotech included, investigations and delineations for wetland/stream/cultural resources/wildlife resources to be in Environmental Permitting project scope
- Intake options, pipeline routes, connections with Partner water systems not limited to what was discussed in prior studies
- Expect to include ENVISION environmental sustainability framework in PERs
- Intake & WTP location aerial photos & video available from planned drone flight



Questions?

