

# Western Intake Partnership

## Brief Project Overview

Four Jordan Lake Water Supply allocation holders – the City of Durham, Orange Water and Sewer Authority (OWASA), Chatham County and the Town of Pittsboro, collectively the Western Intake Partners - are initiating development of a plan to access their water supply allocations through a water supply intake on the west side of Jordan Lake, a water treatment facility on a site about ½ mile from the lake, and finished water pipelines to each of the partners' distribution systems. These water supply facilities are needed to support the Partners' anticipated future growth. The Partners have contracted with HDR Engineering, Inc. of the Carolinas to provide program management support.

The project is planned to proceed in three phases, with the goal of operational facilities by 2030:

- 1 Planning and Permitting
- 2 Design and Bidding
- 3 Construction and Start-up/Commissioning

## BACKGROUND

The vision for the project dates back to the late 1980s, when OWASA purchased property near the new Jordan Lake Reservoir at the corner of Seaforth Road and Pea Ridge Road as the potential site of a future water treatment plant for a Jordan Lake water supply. Key prior events leading up to the current initiative include:

- Allocations of Jordan Lake water supply storage to Durham, Chatham County, OWASA and Pittsboro through Round 4
- Water Intake Site Investigation 1991
- OWASA Finished Water Supply Options Analysis 2001
- Formation of Jordan Lake Partnership 2009
- Western Intake Feasibility Study 2014
- Triangle Region Water Supply Plan 2014
- Formation of Western Intake Partnership 2014
- Triangle Regional Interconnection Study 2016
- Western Intake Partners Economic Feasibility Study 2016
- Western Intake Partnership Agreement 2019

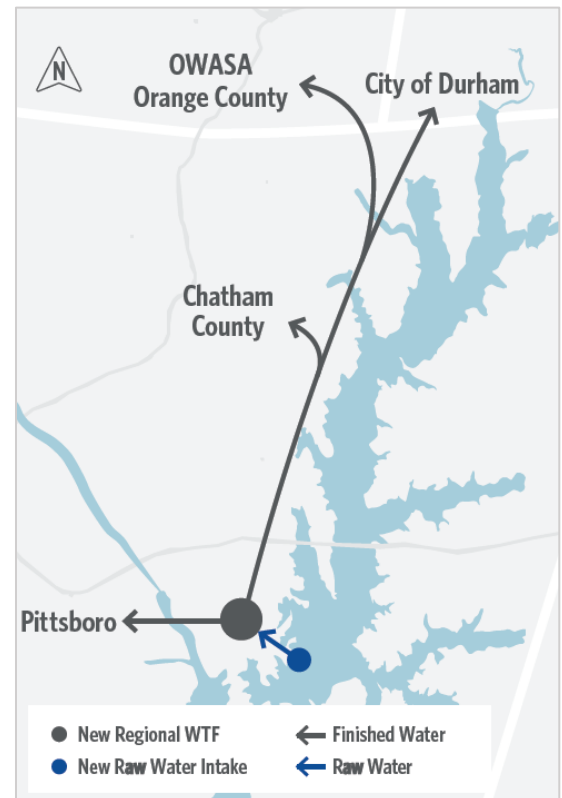
## PROJECT PLAN OVERVIEW

### Phase 1 – Program Initiation, Preliminary Engineering and Permitting

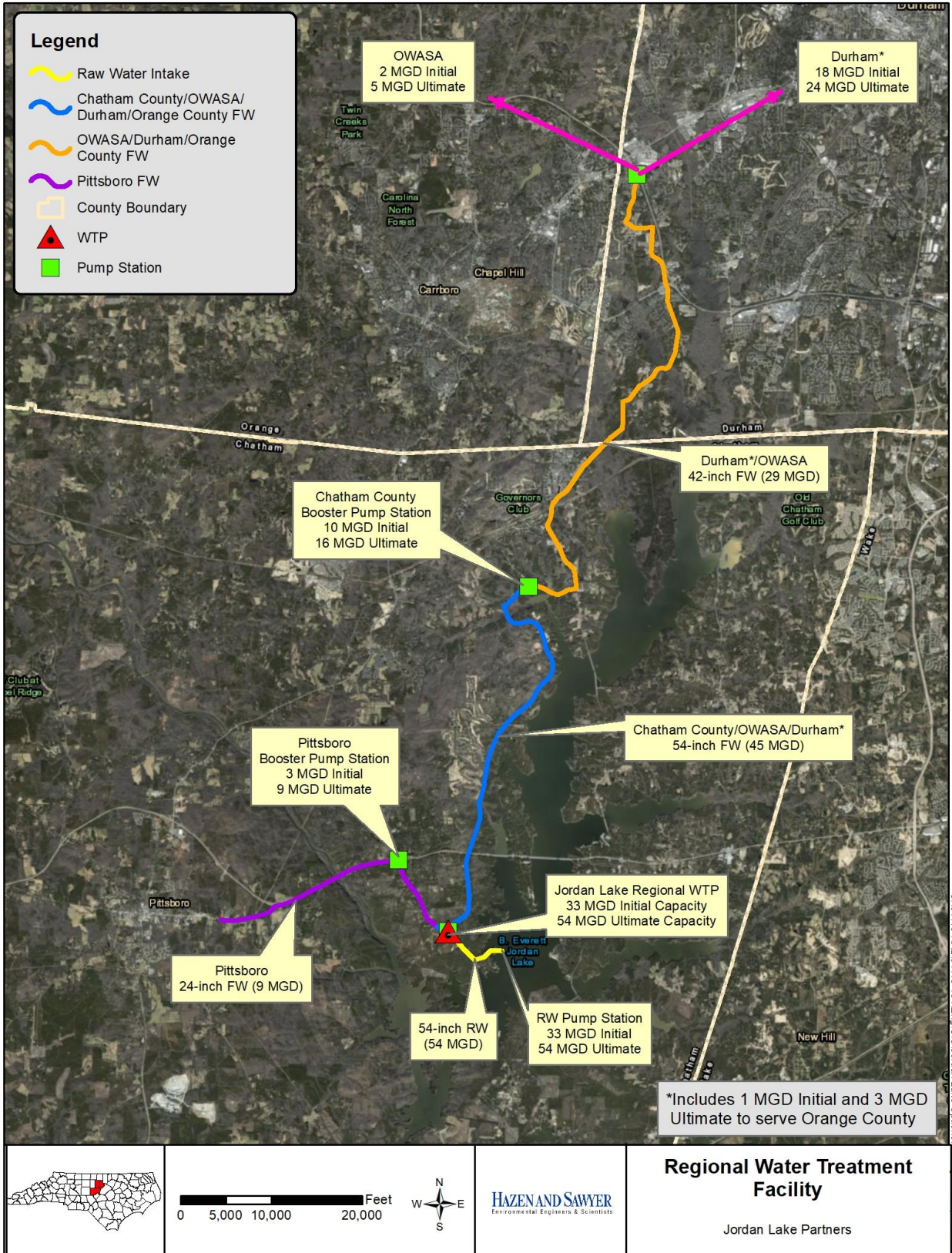
- *Initial Workshops (Fall 2020)*  
Kick-off, Preliminary Project Scoping, Program Development
- *Strategic Communications Planning (Winter-Spring 2021)*
- *Complete Preliminary Projects (2021-2022)*
  - Partnership Governance
  - Water Treatment Plant Preliminary Engineering
  - Intake, Raw Water and Finished Water Conveyance Infrastructure Preliminary Engineering
  - Environmental Permitting
- *Complete Regulatory Processes - NEPA, USACE & DEQ approvals, 401/404, etc. (goal 2023)*
- *Determine Construction Delivery Approach and Align Design & Construction Accordingly (2023)*

### Phase 2 – Design and Bidding & Phase 3 – Construction Phase and Start-up/Commissioning

- *Detailed scope and schedule to be developed following Construction Delivery Approach decision*
- *Anticipate multiple design and construction contracts covering intake, regional water treatment facility, and pipelines*
- *Ongoing stakeholder and property-owner outreach and engagement*



# Preliminary Project Map from 2014 Western Intake Feasibility Study (Hazen & Sawyer)



Intake near Vista Point

Regional Water Treatment Facility at OWASA Property

Pipelines along NCDOT roadways in easement

Finished Water Pipelines connect to existing Water Distribution Systems